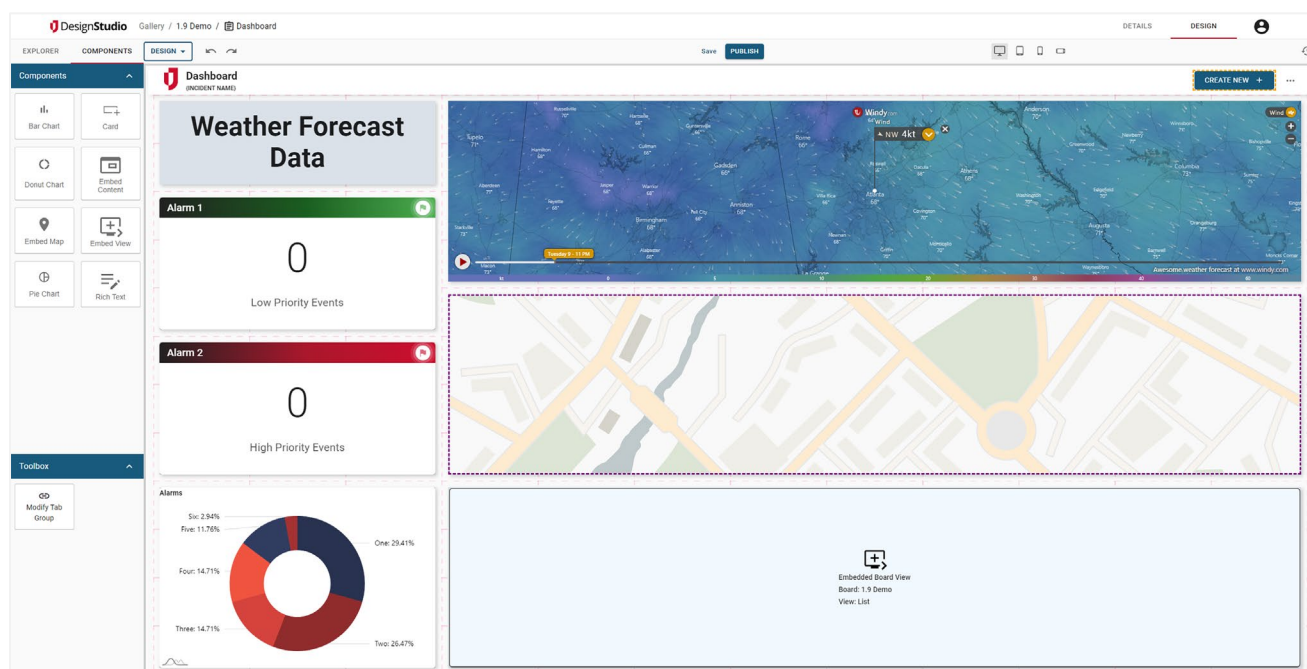


## DesignStudio® 1.9 Release Notes

These notes describe enhancements introduced in the DesignStudio 1.9 release scheduled for Thursday, May 25, 2023. More information is available through the help in your solution or by contacting Juvare Support at 877-771-0911 or [support@juvare.com](mailto:support@juvare.com).

### Dashboard Views (Pro)

With DesignStudio Pro, you can now create Dashboard Views that better represent your data visually with statistical summations, graphs, charts, and embedded content.



New components for Dashboard Views include:

- **Embed Map** – Add focused maps that help you visualize geo-located data.
- **Embed Content** – Use this component to load external webpages by copying and pasting the <iframe> tag.
- **Embed View** – Insert a view from another board into your dashboard.
- **Pie Chart** – Visualize data from any field using a pie chart with preset color themes.
- **Donut Chart** – Visualize the data from any field using a donut chart with preset color themes.
- **Bar Chart** – Visualize the data from any field using a bar chart with preset color themes.
- **Rich Text** – Add rich text that allows you to emphasize content for greater visual impact.
- **Tab Navigation** – Add tabs that allow you to easily navigate between WebEOC views. Available in the Toolbox area, tab groups are created through the Modify Tab Group option by selecting the views you want on the tabs.

## New Display View Components

When creating and editing Details and List Views, new components can be added to expand the type of information you present on boards.

New components for Display Views include:

- **Field** – Fields can be added to Details Views, allowing you to customize the views with system fields or fields created after the view was created.
- **Embed Map** – Maps render geo-located data on Details and List Views, providing a better understanding of locations and locational relevance.
- **Expression Card** – Expression cards can be added to List Views with simple drag-and-drop functionality that automatically generates cards with a more modern look and feel, including optional color and style configurations. The new cards attract more attention to critical information on your boards.

- If interested, you can upgrade existing cards through the Code View. To do this, find the following code snippet:

```
<linkrel="stylesheet" media="all" href="//webeocboardfiles.ju  
vare.com/board/1.0/css/material-  
kit.min.css" path="/css/material-kit.min.css"/>
```

And replace it with this one:

```
<linkrel="stylesheet" media="all" href="//webeocboardfiles.ju  
vare.com/board/1.3/css/material-  
kit.min.css" path="/css/material-kit.min.css"/>
```

- **Toolbox, Tab Navigation** – The use of tab navigation on your boards streamlines access to views in WebEOC, making it easier to find the information you need. To create a tab group, through the Modify Tab Group option, select the views you want available on the tab grouping.

## Help Center Upgrade

The DesignStudio Help Center, launched through the account icon on the upper right, was upgraded to simplify how you search, locate, and print information. Offering technical documentation, release notes, support details, and more, the Help Center is available 24/7/365 to ensure you have access to the information you need when you need it.